

MORTON COUNTY SOCIAL SERVICE BOARD MEETING AGENDA

September 25, 2018

Morton County Commission Room

Morton County Court House

210 2nd Avenue NW, Mandan, North Dakota

10:00 am

Call to Order

Approval of Agenda

Approval of Minutes from the Previous Meeting

Approval of August 2018 Bills

Budget Review

Bonita Moch - HCBS and Child Care Provider Licensure Supervisor

Adult Services Report

Foster Care Report

Child Care Report

Brenda Peterson - Eligibility Supervisor

SNAP Report and Statistics

Economic Assistance Program Activity Report

Unduplicated Economic Assistance Caseload Report

Natalie Anderson - Foster Care Supervisor

Foster Care/In-Home Caseload Report

Social Worker Case Management and Parent Aide Case Report

Jenny Wetsch - Child Protection Supervisor

Child Protection Services Report

Monthly Child Protection Assessments

Dennis Meier - Morton County Social Services Director

Emergency Temp Position for Foster Care Licensing (Review)

Emergency Temp Position for Child Protection Services (Review)

Senate Bill 2206 Committee Work Update

Review of Applications for Vacant MCSS Board Position

ADJOURN

Certain portions of the meeting may be closed due to Executive Session for confidentiality reasons per NDCC 44-04-19.2.

Next Board Meeting: Tuesday, October 23, 2018 10:00am

MORTON COUNTY SOCIAL SERVICE BOARD MINUTES

DATE: August 28, 2018

TIME: 10:02 a.m.

BOARD MEMBERS PRESENT: Del Wetsch, Rose Mary Lawson, Ron Leingang and Andy Zachmeier

BOARD MEMBERS ABSENT:

OTHERS PRESENT: Dennis Meier, MCSS Director, Brittany Slack, Office Assistant III and Lynette Fitterer

The meeting was called to order by Chairperson, Del Wetsch. A motion was made by Board member, Rose Mary Lawson, to approve the August 28th, 2018 Agenda. Board member, Andy Zachmeier, seconded the motion. All voted in favor. Motion Carried.

A motion was made by Board member, Ron Leingang, to approve the July 24th, 2018 Board Meeting Minutes. Board member, Rose Mary Lawson, seconded the motion. All voted in favor. Motion Carried.

Board member, Ron Leingang, moved to approve all August 2018 bills. Board Member, Andy Zachmeier, seconded the motion, All voted in favor. Motion Carried.

Review of Applications for Vacant MCSS Board Position

Board member, Andy Zachmeier, moved to continue the discussion to the next Morton County Social Board Meeting on September 25, 2018. Board Member, Rose Mary Lawson, seconded the motion, All voted in favor. Motion Carried.

BUDGET REVIEW

Dennis Meier, MCSS Director, distributed the Expenditure Guideline for July 2018 to the Board Members. Discussion followed. Total July 2018 Social Service Expenditures were \$237,376.80.

ADULT SERVICES REPORT

Bonita Moch, Supervisor of HCBS and Child Care Provider Licensure, distributed Current Case Count for Adult Services, Adult Foster Homes, CSHS, and Child Care Providers for July 2018.

INCOME MAINTENANCE UNIT REPORT

Brenda Peterson, Eligibility Supervisor, distributed the Summary of SNAP statistics for July 2018; Summary of Economic Assistance Program Activity report from July 1, 2018 through July 31, 2018; Unduplicated Economic Assistance Caseload Report from August 1, 2017 through August 1, 2018; History of Morton County SNAP Issuance from January 2012 to July 2018 and History of Morton County TANF Issuance from January 2012 to July 2018.

FOSTER CARE/IN-HOME REPORT

Natalie Anderson, Foster Care Supervisor, distributed the Foster Care/In-Home Caseload Total Report from January 2018 through July 2018. Social Worker Case Management and Parent Aide Case Totals from January 2018 through July 2018. Licensed foster home totals were also distributed.

CHILD PROTECTION SERVICES REPORT

Jenny Wetsch, CPS Supervisor, distributed the Monthly Child Protection Assessments from January 2016 through July 2018 and Morton County Child Protection Reports from July 1, 2018 through July 31, 2018.

DIRECTOR'S REPORT

Emergency Temp Positions for Foster Care Licensing and Child Protection Services

Dennis Meier, MCSS Director, will continue to provide the board with monthly updates regarding expenditures utilized to fund both emergency temp positions.

ND Association of County Social Service Board Members Annual Meeting

Dennis Meier, MCSS Director, distributed a "Notice of Annual Meeting" memo in reference to the ND Association of County Social Service Board Members Annual Meeting. Discussion followed.

Discussion Regarding Year End MCSS Report and Budget Request

Board Member, Andy Zachmeier shared his thoughts on what should be presented to the Morton County Commission for the year end MCSS Report and Budget Review. Discussion followed.

Total number of MCSS cases all programs combined for July 2018 is as follows: Current cases = 3210, opened cases = 228 and closed cases = 168.

Board member, Andy Zachmeier, motioned to adjourn the meeting. Board member, Ron Leingang, seconded the motion. All voted in favor. Motion carried.

The next Board Meeting is Tuesday, September 25, 2018 at 10:00 a.m.

Meeting adjourned at 12:20 p.m.

Documents provided to the Morton County Social Services Board on this date will be made available to the public upon request.

Del Wetsch
Chairperson

Brittany Slack
Office Assistant III

Morton County

Expenditure Report with Detail Options

Account Mask: ?????????? Fiscal Year: 2018-2018 From Date: 8/1/2018 To Date: 8/31/2018
 Exclude PR encumbrance Include pre encumbrance Print accounts with zero balance
 Account Number / Description Expended YTD Encumbered YTD Unexpended Bal % Used
 SOCIAL WELFARE FUND

Account Number / Description	Expended PTD	Original Budget	Amended Budget	Expended YTD	Encumbered YTD	Unexpended Bal	% Used
SOCIAL SERVICES DEPARTMENT							
207.450.6101 / SALARIES	\$246,894.45	\$0.00	\$2,132,715.92	\$1,372,932.42	\$0.00	\$759,783.50	64.37%
207.450.6102 / DEFERRED COMP. BENEFIT	\$655.50	\$0.00	\$6,993.46	\$3,714.50	\$0.00	\$3,278.96	53.11%
207.450.6111 / ON CALL SALARIES	\$367.50	\$0.00	\$2,738.00	\$1,935.00	\$0.00	\$803.00	70.67%
207.450.6121 / PAID OVERTIME	\$189.95	\$0.00	\$8,000.00	\$1,716.54	\$0.00	\$6,283.46	21.46%
207.450.6211 / HEALTH INSURANCE	\$29,509.90	\$0.00	\$326,875.00	\$221,272.16	\$0.00	\$105,602.84	67.69%
207.450.6221 / FICA MATCH	\$18,179.99	\$0.00	\$164,509.22	\$99,528.56	\$0.00	\$64,980.66	60.50%
207.450.6241 / WORKMENS COMPENSATION	\$0.00	\$0.00	\$6,500.00	\$3,658.74	\$0.00	\$2,841.26	56.29%
207.450.6251 / UNEMPLOYMENT COMPENSATION	\$0.00	\$0.00	\$2,040.00	\$0.00	\$0.00	\$2,040.00	0.00%
207.450.6300 / NDPERS DEF. BENEFIT	\$33,063.48	\$0.00	\$296,612.74	\$186,490.60	\$0.00	\$110,122.14	62.87%
207.450.6321 / PROPERTY & LIABILITY INSURAN	\$0.00	\$0.00	\$1,500.00	\$1,474.60	\$0.00	\$25.40	98.31%
207.450.6339 / MEMBERSHIPS & REGISTRATIONS	\$0.00	\$0.00	\$3,500.00	\$2,267.00	\$0.00	\$1,233.00	64.77%
207.450.6341 / TRAVEL EXPENSE	\$66.08	\$0.00	\$25,000.00	\$10,848.13	\$0.00	\$14,151.87	43.39%
207.450.6343 / REPAIRS AND MAINTENANCE	\$5,744.00	\$0.00	\$26,000.00	\$26,881.75	\$0.00	(\$881.75)	103.39%
207.450.6351 / UTILITIES	\$1,565.94	\$0.00	\$19,000.00	\$13,149.02	\$0.00	\$5,850.98	69.21%
207.450.6359 / POSTAGE	\$0.00	\$0.00	\$6,000.00	\$2,608.20	\$0.00	\$3,391.80	43.47%
207.450.6360 / MOBILE COMMUNICATIONS	\$0.00	\$0.00	\$3,300.00	\$1,829.75	\$0.00	\$1,470.25	55.45%
207.450.6361 / TELEPHONE	\$783.35	\$0.00	\$8,000.00	\$5,575.51	\$0.00	\$2,424.49	69.69%
207.450.6381 / COPIER EXPENSE	\$0.00	\$0.00	\$5,678.00	\$3,517.84	\$0.00	\$2,160.16	61.96%
207.450.6401 / OFFICE SUPPLIES	\$24.54	\$0.00	\$7,500.00	\$3,251.50	\$0.00	\$4,248.50	43.35%
207.450.6412 / SUPPLIES-COMPUTER	\$0.00	\$0.00	\$1,200.00	\$785.91	\$0.00	\$414.09	65.49%
207.450.6499 / CLIENT AID	\$7.00	\$0.00	\$7,250.00	\$1,048.01	\$0.00	\$6,201.99	14.46%
207.450.6651 / CAPITAL OUTLAY-EQUIPMENT	\$400.01	\$0.00	\$25,000.00	\$15,707.98	\$0.00	\$9,292.02	62.83%
207.450.6904 / GA BURIALS	\$1,105.00	\$0.00	\$27,500.00	\$3,460.00	\$0.00	\$24,040.00	12.58%
207.450.6905 / SAFETY/PERMANENCY FUNDS	\$667.00	\$0.00	\$8,000.00	\$2,960.70	\$0.00	\$5,039.30	37.01%
207.450.6907 / SHELTER CARE	\$250.00	\$0.00	\$3,600.00	\$2,000.00	\$0.00	\$1,600.00	55.56%

Morton County

Expenditure Report with Detail Options

Account Mask: ?????????? Fiscal Year: 2018-2018 From Date: 8/1/2018 To Date: 8/31/2018
 Exclude PR encumbrance Include pre encumbrance Print accounts with zero balance

Account Number / Description	Original Budget	Amended Budget	Expended YTD	Encumbered YTD	Unexpended Bal	% Used
207.450.6911 / EXPERT/PROFESSIONAL WITNESS FEES	\$0.00	\$0.00	\$2,283.02	\$0.00	(\$2,283.02)	0.00%
207.450.6912 / CWB PER DIEM	\$0.00	\$2,500.00	\$512.30	\$0.00	\$1,987.70	20.49%
207.450.6927 / TERMINAL COST	\$0.00	\$0.00	\$120.00	\$0.00	(\$120.00)	0.00%
207.450.6932 / PRINTER EXPENSE	\$0.00	\$3,500.00	\$408.97	\$0.00	\$3,091.03	11.68%
Total For SOCIAL SERVICES	\$0.00	\$3,131,012.34	\$1,991,938.71	\$0.00	\$1,139,073.63	63.62%
Total For SOCIAL WELFARE	\$0.00	\$3,131,012.34	\$1,991,938.71	\$0.00	\$1,139,073.63	63.62%

CURRENT CASE COUNT

September 2018 for August 2018

ADULT SERVICES

133— (decrease of 2)

Opened 3new cases

Closed 5

Inquiries/ Denied--12

7—pending

Worker breakdown

BM —27 cases (14 BC, 7 MW, 3 MSP/PCS, 4 SPED)

LC—57 cases (18 BC, 12 MW, 3 MSP/PCS, 22 SPED, 2 Ex-SPED)

PW—51 cases (18 BC, 14 MW, 6 MSP/PCS, 12 SPED, 1 Ex- SPED)

FOSTER HOMES (BM)

No Adult Foster Homes

CHILD CARE (LA)

62—licensed (increase from 58)

8—self-declared (increase from 4)

CHILDREN'S SPECIAL HEALTH SERVICES (PW)

15—Treatment Services (up 3)

1 pending

1 inquiry

9—Diagnostic (same)

**UNDUPLICATED ECONOMIC ASSISTANCE CASELOAD REPORT
(AS OF 1ST DAY OF MONTH)**

	9/1/17	10/1/17	11/1/17	12/1/17	1/1/18	2/1/18	3/1/18	4/1/18	5/1/18	6/1/18	7/1/18	8/1/18	9/1/18
TANF	6	8	7	9	8	7	6	6	3	3	4	4	5
TANF/SNAP	16	18	18	15	14	17	18	15	11	16	17	20	15
TANF/ME	0	0	0	1	1	0	0	0	1	1	1	1	1
TANF/ME/QS	1	1	1	0	1	0	0	0	0	0	0	0	0
TANF/SNAP/ME	4	3	3	4	4	4	5	5	5	5	7	5	6
TANF/SNAP/QS	1	1	1	1	0	0	0	0	0	0	0	0	0
SNAP	496	517	502	525	552	554	560	554	516	552	536	523	515
ME	504	510	506	511	489	497	497	497	502	502	512	521	533
QS	19	20	22	22	23	24	26	29	34	29	29	30	32
SNAP/ME	153	146	139	147	146	149	156	156	149	160	159	156	156
SNAP/QS	62	59	57	56	57	55	52	51	43	54	53	53	55
ME/QS	90	91	90	89	92	92	90	91	93	97	103	98	95
SNAP/ME/QS	109	108	113	110	99	106	113	111	99	110	110	109	114
ACA/EXPANSION	1200	1176	1166	1184	1201	1222	1224	1223	1255	1245	1229	1223	1221
LIHEAP	2	0	134	228	338	414	451	498	513	525	0	0	0
CHILD CARE	61	64	62	64	66	65	62	60	59	56	59	62	65
FOSTER CARE	41	41	36	47	46	47	48	46	48	53	50	49	49
SUBSIDIZED ADOPTION	42	37	35	36	36	38	39	39	40	46	42	43	42
BASIC CARE	43	40	44	47	47	46	48	46	48	50	47	48	48
TOTALS	2850	2840	2936	3096	3220	3337	3395	3427	3419	3504	2958	2945	2952

Note: During the past 12 months, total cases increased by 102.

NUMBER OF EA CASES AND RECIPIENTS ELIGIBLE FOR 1 DAY OF THE CALENDAR YEAR (by SFY) - MORTON COUNTY

	2009	2010	2011	2012	2013	2014	2015	2016	2017
TANF									
Unduplicated count of TANF Cases	168	152	101	86	72	70	69	62	58
Unduplicated count of TANF Recipients	452	368	261	193	167	180	162	165	149
Percent of Total State Recipients	3.62%	3.44%	2.80%	2.31%	2.21%	2.60%	2.60%	2.80%	2.63%
Percent of County Population Receiving	1.72%	1.39%	0.95%	0.70%	0.59%	0.62%	0.54%	0.54%	0.48%
Unduplicated count of TANF Caretakers	135	107	69	51	46	45	38	42	35
Unduplicated count of TANF Children	317	261	192	142	121	135	124	123	114
CHILD CARE ASSISTANCE									
Unduplicated count of Child Care Cases	209	2010	2011	2012	2013	2014	2015	2016	2017
Unduplicated count of Child Care Recipients	216	188	187	144	89	116	133	141	102
Unduplicated count of Child Care Recipients	375	322	307	247	155	184	201	210	152
Percent of Total State Recipients	4.65%	4.15%	4.18%	4.05%	3.54%	3.07%	3.03%	3.18%	3.11%
Percent of County Population Receiving	1.43%	1.22%	1.11%	0.89%	0.55%	0.63%	0.67%	0.69%	0.49%
SNAP									
Unduplicated count of SNAP Cases	2009	2010	2011	2012	2013	2014	2015	2016	2017
Unduplicated count of SNAP Recipients	1321	1518	1488	1378	1256	1219	1234	1262	1277
Unduplicated count of SNAP Recipients	3120	3590	3445	3220	2960	2755	2796	2830	2881
Percent of Total State Recipients	4.18%	4.33%	3.98%	3.75%	3.51%	3.39%	3.46%	3.44%	3.52%
Percent of County Population Receiving	11.88%	13.57%	12.48%	11.61%	10.53%	9.50%	9.38%	9.34%	9.35%
Unduplicated count of Children	1473	1698	1597	1514	1419	1280	1301	1313	1339
Unduplicated count of Adults (19-60 - includes disabled)	1400	1630	1572	1444	1288	1214	1235	1238	1273
Unduplicated count of Adults (60 & older)	247	262	276	262	153	261	260	279	269
MEDICAID									
Unduplicated count of Medicaid Cases	2009	2010	2011	2012	2013	2014	2015	2016	2017
Unduplicated count of Medicaid Recipients	1759	1962	1998	1962	1960	2165	2571	2635	2724
Unduplicated count of Medicaid Recipients	3387	3829	3885	3780	3698	3990	4660	4735	4901
Percent of Total State Recipients	4.36%	4.53%	4.38%	4.18%	4.05%	3.78%	4.02%	3.87%	3.96%
Percent of County Population Receiving	12.90%	14.47%	14.08%	13.63%	13.16%	13.76%	15.69%	15.62%	15.91%
Unduplicated count of Children	1787	2078	2088	2061	2038	1919	2187	2181	2233
Unduplicated count of Adults (19-65 - includes disabled)	1257	1376	1406	1351	1295	1703	2093	2142	2239
Unduplicated count of Adults (65 & older)	343	375	391	368	365	368	400	412	429
LIHEAP									
Unduplicated count of LIHEAP Cases	2009	2010	2011	2012	2013	2014	2015	2016	2017
Unduplicated count of LIHEAP Recipients	795	777	758	614	494	497	483	454	456
Unduplicated count of LIHEAP Recipients	2034	2003	1955	1521	1187	1195	1159	1064	1010
Percent of Total State Recipients	5.35%	5.24%	5.19%	4.72%	3.89%	3.78%	3.96%	3.73%	3.56%
Percent of County Population Receiving	7.75%	7.57%	7.08%	5.48%	4.22%	4.12%	3.89%	3.51%	3.28%

**NORTH DAKOTA DEPARTMENT OF HUMAN SERVICES
SUPPLEMENTAL NUTRITION ASSISTANCE PROGRAM (SNAP)
Bismarck, North Dakota**

September 6, 2018

Following is a summary of SNAP statistics for AUGUST 2018:

County	PARTICIPATION			County	PARTICIPATION		
	Households*	Persons**	Issuance		Households*	Persons**	Issuance
ADAMS	53	113	\$11,922	MCKENZIE	162	406	\$49,181
BARNES	398	776	\$80,418	MCLEAN	185	391	\$44,245
BENSON	731	2,104	\$281,358	MERCER	165	319	\$36,949
BILLINGS/ G.VALLEY	2	6	\$898	MORTON	876	1,841	\$214,455
BOTTINEAU	59	103	\$12,138	MOUNTRAIL	120	325	\$37,615
	226	450	\$53,372	NELSON	89	177	\$15,656
BOWMAN/ SLOPE	76	122	\$13,433	OLIVER	45	95	\$10,426
BURKE	13	20	\$2,731	PEMBINA	167	363	\$38,942
	37	98	\$9,375	PIERCE	125	250	\$28,561
BURLEIGH	2,409	4617	\$545,231	RAMSEY	550	1,102	\$130,289
CASS	5,690	12,080	\$1,372,025	RANSOM	138	261	\$27,503
CAVALIER	61	160	\$16,344	RENVILLE	55	103	\$10,702
DICKEY	120	235	\$23,174	RICHLAND	524	1,090	\$119,067
DIVIDE	45	84	\$9,708	ROLETTE	2,262	4,855	\$688,518
DUNN	77	185	\$23,938	SARGENT	81	179	\$19,213
EDDY	91	168	\$20,509	SHERIDAN	59	134	\$15,173
EMMONS	116	194	\$21,723	SIOUX	453	\$1,391	\$192,824
FOSTER	80	145	\$17,208	STARK	914	1,749	\$217,622
GRAND FORKS	2,231	4,683	\$569,879	STEELE	33	70	\$8,394
GRANT	85	169	\$19,939	STUTSMAN	845	1,436	\$174,884
GRIGGS	73	133	\$15,104	TOWNER	69	148	\$15,603
HETTINGER	63	153	\$15,624	TRAIL	197	427	\$46,348
KIDDER	66	131	\$13,975	WALSH	344	745	\$85,036
LAMOURE	65	122	\$15,620	WARD	2,037	4,042	\$478,212
LOGAN	44	97	\$9,759	WELLS	149	261	\$30,170
MCHENRY	193	373	\$43,790	WILLIAMS	683	1,375	\$173,913
MCINTOSH	70	127	\$14,292				
				Total	24,501	51,183	\$6,142,988

* This column reflects the number of cases that participated during the reporting month.

** This column reflects the number of persons that participated during the reporting month.

SUMMARY OF ECONOMIC ASSISTANCE PROGRAM ACTIVITY

as of 09/01/2018

Program Activity 08/01/2018 THROUGH 08/31/2018

NEW APPLICATIONS

Program	Period of 08/01/2018 - 08/31/2018		Period of 07/01/2018 - 07/31/2018	
	Received	Approved	Denied	Received
TANF	19	4	15	10
SNAP	63	40	23	60
Medicaid	30	16	14	26
ACA/Expansion	80	41	39	76
Child Care	13	7	6	10
Basic Care	0	0	0	1
Foster Care	0	0	0	2
Sub-Adoption	0	0	0	0
GA Burial	1	0	1	1
TOTAL	206	108	98	186

Change from Last Period +20 Applications

CASE CLOSINGS

Program	Period of 08/01/2018 - 08/31/2018		Period of 07/01/2018 - 07/31/2018	
	Case Closings	Case Closings	Case Closings	Case Closings
TANF	1	1	5	5
SNAP	34	34	45	45
Medicaid	11	11	13	13
ACA/Expansion	48	48	39	39
Child Care	2	2	2	2
Basic Care	0	0	0	0
Foster Care	0	0	4	4
Sub-Adoption	0	0	0	0
TOTAL	96	96	108	108

Change from Last Period -12 Cases Closed

*** LOW INCOME HOME ENERGY ASSISTANCE PROGRAM**

Received	Period of 08/01/2018 - 08/31/2018		Period of 07/01/2018 - 07/31/2018	
	Approved	Denied	Pending	Received
0	0	0	0	0
596	532	64		
Y-T-D Totals as of 09/01/2018				
FFY 2018				

ALL PROGRAMS

Number of New Cases in 07/2018	0
Number of Cases as of 08/01/2018	2945

REVIEWS OF ELIGIBILITY COMPLETED ON OPEN CASES

Program	Period of 08/01/2018 - 08/31/2018		Period of 07/01/2018 - 07/31/2018	
	Reviews Completed	Reviews Completed	Reviews Completed	Reviews Completed
TANF	0	0	0	0
SNAP	84	84	82	82
Medicaid	67	67	64	64
ACA/Expansion	67	67	60	60
Child Care	3	3	0	0
Basic Care	3	3	2	2
Foster Care	0	0	3	3
Sub-Adoption	3	3	0	0
TOTAL	227	227	211	211

Change from Last Period +16 Reviews Completed

History of Morton County TANF Issuance

Month	2012	2013*	2014*	2015	2016	2017	2018
January	# of Families 54	31	INFORMATION	30	32	29	28
	# of Individuals 119	80	IS	68	79	71	66
	Total TANF Issued \$ 12,759.00	\$ 6,802.00	UNAVAILABLE	\$ 8,606.00	\$ 8,574.00	\$ 7,376.00	\$ 7,585.00
	Transportation Amt \$ 4,765.00	\$ 1,926.00		\$ 1,688.00	\$ 2,217.00	\$ 2,250.00	\$ 1,838.00
February	# of HH 49	33	INFORMATION	29	30	33	32
	# of Individuals 103	83	IS	58	72	71	77
	Total TANF Issued \$ 12,304.00	\$ 8,160.00	UNAVAILABLE	\$ 6,792.00	\$ 8,101.00	\$ 7,244.00	\$ 8,147.00
	Transportation Amt \$ 3,360.00	\$ 1,879.00		\$ 1,446.00	\$ 2,413.00	\$ 2,290.00	\$ 1,878.00
March	# of HH 48	29	INFORMATION	29	33	34	29
	# of Individuals 113	73	IS	62	83	76	70
	Total TANF Issued \$ 13,392.00	\$ 7,322.00	UNAVAILABLE	\$ 7,123.00	\$ 8,911.00	\$ 7,002.00	\$ 7,359.00
	Transportation Amt \$ 3,847.00	\$ 2,425.00		\$ 2,101.00	\$ 2,654.00	\$ 2,151.00	\$ 1,597.00
April	# of HH 51	34	INFORMATION	27	30	30	25
	# of Individuals 118	91	IS	59	83	68	59
	Total TANF Issued \$ 12,497.00	\$ 8,858.00	UNAVAILABLE	\$ 7,064.00	\$ 8,101.00	\$ 8,162.00	\$ 6,425.00
	Transportation Amt \$ 3,655.00	\$ 2,331.00		\$ 1,822.00	\$ 2,413.00	\$ 2,147.00	\$ 1,256.00
May	# of HH 46	33	30	31	35	31	23
	# of Individuals 102	89	75	70	98	76	51
	Total TANF Issued \$ 11,271.00	\$ 8,535.00	\$ 8,718.00	\$ 5,505.00	\$ 9,857.00	\$ 7,939.00	\$ 7,004.00
	Transportation Amt \$ 2,900.00	\$ 2,646.00	\$ 2,264.00	\$ 2,454.00	\$ 2,581.00	\$ 2,325.00	\$ 1,103.00
June	# of HH 42	29	31	32	34	28	28
	# of Individuals 91	71	77	73	83	65	68
	Total TANF Issued \$ 10,020.00	\$ 6,790.00	\$ 9,086.00	\$ 8,574.00	\$ 7,801.00	\$ 7,617.00	\$ 8,207.00
	Transportation Amt \$ 2,200.00	\$ 1,876.00	\$ 2,246.00	\$ 2,217.00	\$ 3,608.00	\$ 1,551.00	\$ 1,453.00
July	# of HH 42	30	30	26	30	30	30
	# of Individuals 87	73	70	56	73	69	70
	Total TANF Issued \$ 10,707.00	\$ 5,684.00	\$ 6,313.00	\$ 6,802.00	\$ 7,234.00	\$ 8,642.00	\$ 8,314.00
	Transportation Amt \$ 2,189.00	\$ 2,247.00	\$ 2,032.00	\$ 1,754.00	\$ 2,300.00	\$ 1,638.00	\$ 1,439.00
August	# of HH 42	31	31	31	32	30	27
	# of Individuals 93	75	75	72	78	63	63
	Total TANF Issued \$ 10,630.00	\$ 6,002.00	\$ 8,296.00	\$ 6,705.00	\$ 7,023.00	\$ 6,738.00	\$ 7,013.00
	Transportation Amt \$ 2,424.00	\$ 1,879.00	\$ 1,919.00	\$ 2,360.00	\$ 2,550.00	\$ 1,386.00	\$ 1,025.00
September	# of HH 39	32	30	29	30	29	
	# of Individuals 91	86	78	66	73	65	
	Total TANF Issued \$ 8,679.00	\$ 7,627.00	\$ 7,017.00	\$ 5,786.00	\$ 8,101.00	\$ 6,421.00	
	Transportation Amt \$ 2,787.00	\$ 2,200.00	\$ 1,292.00	\$ 2,386.00	\$ 2,413.00	\$ 1,451.00	
October	# of HH 39	31	26	30	31	32	
	# of Individuals 100	92	64	69	78	78	
	Total TANF Issued \$ 10,326.00	\$ 8,082.00	\$ 5,940.00	\$ 6,848.00	\$ 7,677.00	\$ 7,034.00	
	Transportation Amt \$ 2,393.00	\$ 2,719.00	\$ 1,519.00	\$ 2,377.00	\$ 2,320.00	\$ 1,701.00	
November	# of HH 40	INFORMATION	26	35	32	33	
	# of Individuals 97	IS	64	79	83	81	
	Total TANF Issued \$ 9,489.00	UNAVAILABLE	\$ 5,940.00	\$ 8,000.00	\$ 7,986.00	\$ 8,754.00	
	Transportation Amt \$ 2,361.00		\$ 1,519.00	\$ 2,819.00	\$ 2,868.00	\$ 1,979.00	
December	# of HH 35	INFORMATION	26	30	29	29	
	# of Individuals 84	IS	61	68	73	70	
	Total TANF Issued \$ 9,035.00	UNAVAILABLE	\$ 7,639.00	\$ 7,674.00	\$ 7,070.00	\$ 8,385.00	
	Transportation Amt \$ 2,080.00		\$ 1,391.00	\$ 2,256.00	\$ 2,087.00	\$ 1,662.00	
Total	TANF ISSUED	\$ 131,109.00	\$ 73,862.00	\$ 58,949.00	\$ 85,479.00	\$ 96,436.00	\$ 60,054.00
Total	TRANSPORTATION	\$ 34,961.00	\$ 22,128.00	\$ 14,182.00	\$ 25,680.00	\$ 22,531.00	\$ 11,589.00

Exact data not available - Anticipated Amount

* Information not available for some months

History of Morton County SNAP Issuance

Month	2012	2013	2014	2015	2016	2017	2018
January	# of HH 1016	889	874	807	849	857	906
	# of Individuals 2263	1,940	1,876	1,708	1,808	1,832	1,908
	Issuance Amt \$ 283,613.00	\$ 236,248.00	\$ 207,240.00	\$ 190,385.00	\$ 207,398.00	\$ 209,417.00	\$ 223,771.00
February	# of HH 1010	883	870	821	869	860	894
	# of Individuals 2244	1,920	1,860	1,750	1,870	1,839	1,872
	Issuance Amt \$ 284,982.00	\$ 235,120.00	\$ 207,262.00	\$ 197,768.00	\$ 214,593.00	\$ 209,151.00	\$ 220,726.00
March	# of HH 1002	877	860	810	850	852	910
	# of Individuals 2225	1,883	1,802	1,714	1,850	1,816	1,906
	Issuance Amt \$ 281,119.00	\$ 229,377.00	\$ 202,180.00	\$ 194,142.00	\$ 211,416.00	\$ 212,221.00	\$ 221,225.00
April	# of HH 983	864	846	828	869	855	926
	# of Individuals 2172	1,861	1,761	1,760	1,906	1,813	1,964
	Issuance Amt \$ 272,572.00	\$ 229,123.00	\$ 195,865.00	\$ 203,384.00	\$ 214,320.00	\$ 208,762.00	\$ 228,825.00
May	# of HH 970	838	842	832	867	855	919
	# of Individuals 2118	1,793	1,766	1,769	1,906	1,808	1,952
	Issuance Amt \$ 267,150.00	\$ 224,314.00	\$ 195,868.00	\$ 203,509.00	\$ 214,320.00	\$ 214,797.00	\$ 228,247.00
June	# of HH 967	826	826	809	876	845	905
	# of Individuals 2124	1,753	1,752	1,687	1,904	1,791	1,945
	Issuance Amt \$ 266,083.00	\$ 214,905.00	\$ 194,734.00	\$ 198,153.00	\$ 216,228.00	\$ 209,636.00	\$ 224,002.00
July	# of HH 941	831	802	780	874	826	888
	# of Individuals 2056	1,757	1,709	1,610	1,882	1,745	1,890
	Issuance Amt \$ 255,074.00	\$ 215,001.00	\$ 189,264.00	\$ 192,012.00	\$ 216,430.00	\$ 207,333.00	\$ 221,402.00
August	# of HH 937	829	792	788	885	831	876
	# of Individuals 2088	1,801	1,670	1,626	1,913	1,742	1,841
	Issuance Amt \$ 254,234.00	\$ 217,442.00	\$ 182,408.00	\$ 190,696.00	\$ 219,511.00	\$ 207,702.00	\$ 214,455.00
September	# of HH 911	809	809	794	896	855	
	# of Individuals 1992	1,718	1,745	1,671	1,913	1,773	
	Issuance Amt \$ 242,069.00	\$ 209,009.00	\$ 188,884.00	\$ 193,072.00	\$ 219,511.00	\$ 211,955.00	
October	# of HH 899	803	804	792	877	844	
	# of Individuals 1936	1,709	1,710	1,636	1,892	1,771	
	Issuance Amt \$ 238,692.00	\$ 205,544.00	\$ 197,987.00	\$ 189,155.00	\$ 217,656.00	\$ 210,645.00	
November	# of HH 895	815	801	797	866	859	
	# of Individuals 1925	1,740	1,709	1,642	1,844	1,796	
	Issuance Amt \$ 237,582.00	\$ 194,415.00	\$ 193,803.00	\$ 191,276.00	\$ 213,061.00	\$ 213,603.00	
December	# of HH 885	827	819	829	846	896	
	# of Individuals 1934	1,772	1,743	1,735	1,786	1,867	
	Issuance Amt \$ 238,921.00	\$ 197,528.00	\$ 196,438.00	\$ 200,050.00	\$ 208,348.00	\$ 222,026.00	
Total	\$ 3,122,091.00	\$ 2,608,026.00	\$ 2,351,933.00	\$ 2,343,602.00	\$ 2,572,792.00	\$ 2,537,248.00	\$ 1,782,653.00

History of Morton County CCAP Payments			
Month		2017	2018
January	# of HH	52	54
	# of Children	67	75
	Payments	\$ 21,625.00	\$ 38,636.00
February	# of HH	52	55
	# of Children	67	77
	Payments	\$ 21,625.00	\$ 27,968.00
March	# of HH	52	57
	# of Children	67	83
	Payments	\$ 21,625.00	\$ 30,116.00
April	# of HH	52	54
	# of Children	67	81
	Payments	\$ 21,625.00	\$ 30,146.00
May	# of HH	52	51
	# of Children	67	72
	Payments	\$ 21,625.00	\$ 29,982.00
June	# of HH	53	55
	# of Children	64	80
	Payments	\$ 19,704.00	\$ 32,193.00
July	# of HH	56	55

	# of Children	79	82
	Payments	\$ 28,980.00	\$ 34,229.00
August	# of HH	52	57
	# of Children	75	86
	Payments	\$ 26,499.00	\$ 33,260.00
September	# of HH	56	
	# of Children	85	
	Payments	\$ 30,289.00	
October	# of HH	54	
	# of Children	72	
	Payments	\$ 25,423.00	
November	# of HH	60	
	# of Children	78	
	Payments	\$ 29,261.00	
December	# of HH	55	
	# of Children	77	
	Payments	\$ 27,202.00	
Total	Payments	\$ 295,483.00	\$ 256,530.00
Yellow Highlighted = Anticipated Amounts			

FOSTER CARE / IN-HOME

CASE LOADs August 2018

CASE LOADS TOTALS = 67 (64 end of month)

38 Foster care – (Foster care is counted by child)

18- Children in foster homes/PATH 6-Group Care/PRTF 14-Relative Care

29 In-Home Cases, ICPC, Home Studies and Courtesy Case management

	Opened	Closed
2018		
January	4	5
February	3	5
March	9	7
April	14	6
May	4	6
June	4	5
July	0	10
August	3	3

2018

<u>Jan</u>	<u>Feb</u>	<u>Mar</u>	<u>Apr</u>	<u>May</u>	<u>June</u>	<u>July</u>	<u>Aug</u>
79	79	82	89	81	80	75	67

Children and Family Services Unit – Parent Aide Caseload

KH	Jan	Feb	Mar	April	May	June	July	Aug
	11	11	10	12	9	10	10	9

BH	Jan	Feb	Mar	April	May	June	July	Aug
	5	4	4	7	8	4	4	2

***Deb N. cases were transferred to other CM beginning of August. Mid September Deb's replacement took on more of her cases. New worker for IH will start mid- October.**

FOSTER HOME REPORT (need to update)

27 – Family foster home

18 – General

9 – Specific

3 – Inquiries

– Guardianship completed

2 – Home studies in process (One is now on hold until further notice)

Morton County Child Protection Reports August 1 to August 31st

-Of the 52 total reports in August, 12 Administratively Assessed (AA), 4 Administrative Referrals (AR), and 5 Assessment Terminated in Progress (ATP).

* Total number of Alternative Response cases- 0

*Total number of Prenatal Exposure (drugs/alcohol)- 1

*Total number of 960 reports of abuse (includes physical, sexual)- 7

*Total number of 960 reports of neglect (includes educational, psychological)- 44

-31 of the 52 reports became part of a full assessment.

Beginning August caseload-

Opened/closed- August 1- August 31st

Jenny Wetsch- 4-ATP

Opened-12-(AA), 4- (AR), 1- (ATP)

Closed- 1-(ATP), 9- (AA), 3-(AR)

End- 4- (ATP), 1- (AR), 3-(AA)

CPS Worker (KO)- 17

Opened- 6, Closed- 10, End-13 (*2 new reports received on open cases)

CPS Worker (VZ)- 10

Opened 8, Closed- 9, End- 8 (*2 new reports received on open cases)

CPS Worker (RB)- 13

Opened-5, Closed- 9, End- 9 (*1 new reports received on open cases)

Part-time CPS Worker (TM)-8

Opened 0, Closed- 3, End- 5 (*2 new reports received on open cases)

Emergency Worker (KD)- 4

Opened 4, Closed- 3, End 5 (*2 new report received on an open case)

*When new reports are received on open cases, the reports are combined with the current open case and the case is still counted as 1 case for the worker. Worker needs to address all new reports that come in on their case.)

Monthly Child Protection Assessments (Full & ATP)

2016

January- 44
February- 47
March- 44
April- 36
May- 53
June- 38
July- 45
August- 38
September- 45
October- 48
November- 49
December- 35

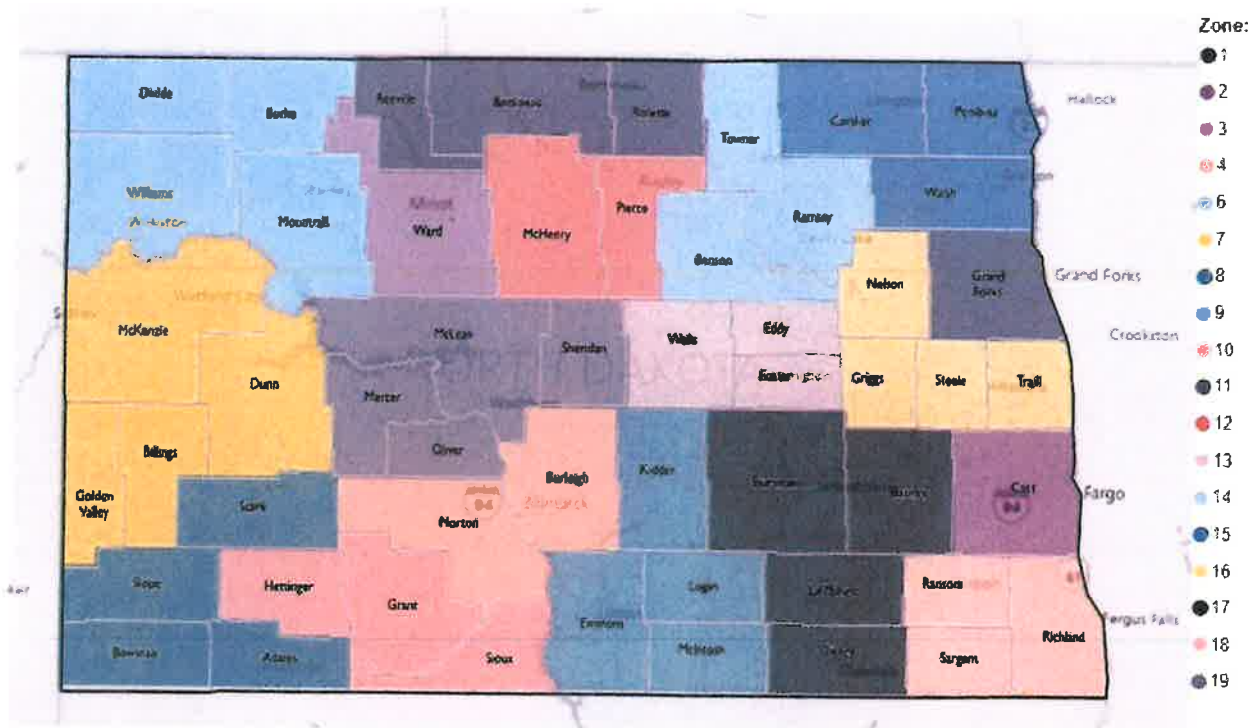
2017

January- 59
February- 48
March- 55
April- 45
May- 68
June- 47
July-37
August-48
September- 52
October- 52
November-64
December-54

2018

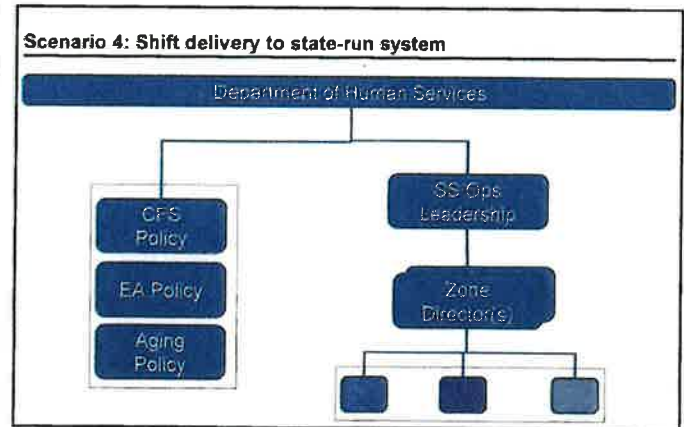
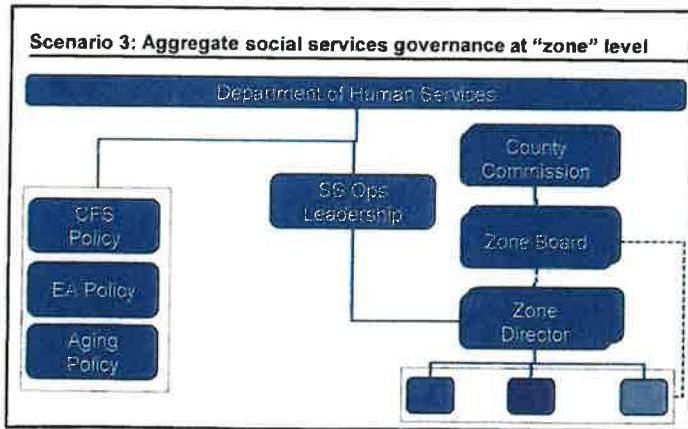
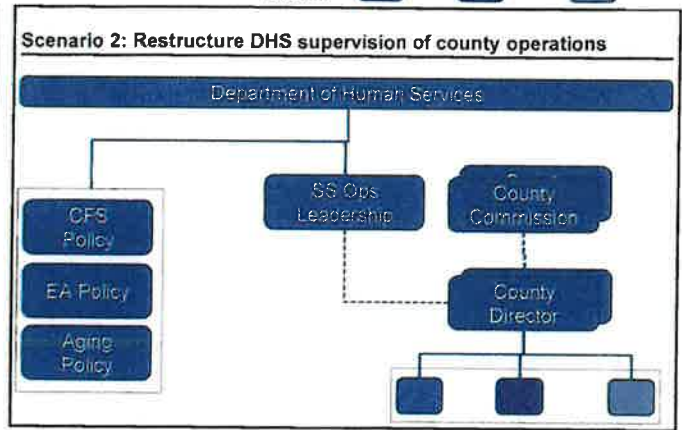
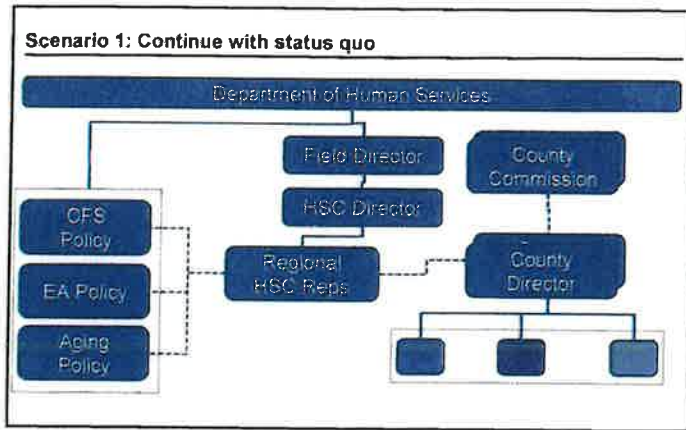
January- 51
February- 43
March- 61
April- 53
May- 63
June- 34
July- 35
August- 36

One proposed zonal division of counties



Scenarios for organizational governance

Delivery functions: EA Adult CFS



MORTON COUNTY AUXILIARY BOARD APPLICATION FORM

Name: **Lynette M. Fitterer**

Address: 211 6th Street South

Home Phone: 701-391-9901 Work Phone: 701-843-7577

Email: packer04@westriv.com

Board or Commission on which you prefer to serve: Social Services Board

List below the skills or qualifications you could bring to this Board or Commission:

Former teacher and coach. Knowledge of social laws and procedures. Position as Mayor of New Salem has allowed me to become proficient in confidential stability and legal proceedings.

If you have any special interest or reason for serving on this Board or Commission, please explain below.
[Click here to enter text](#)

Principal Occupation/Source of Income (check one)

- | | | | |
|-------------------------------------|------------------------------------|---|--|
| <input type="checkbox"/> Farmer | <input type="checkbox"/> Military | <input type="checkbox"/> Investor/Retired | <input checked="" type="checkbox"/> Clerical & Sales |
| <input type="checkbox"/> Laborer | <input type="checkbox"/> Craftsman | <input type="checkbox"/> Business Owner | <input type="checkbox"/> Professional |
| <input type="checkbox"/> Government | <input type="checkbox"/> Student | <input type="checkbox"/> Other | |

List the name of each business or trust that is NOT the principal source of income, in which you have a financial interest:

City of New Salem

List below the associations or institutions with which you are closely associated, or serve as a director or officer:

Mayor of New Salem

New Salem Economic Development Committee

Signature: _____ Date: _____

MORTON COUNTY AUXILIARY BOARD APPLICATION FORM

Name: Edgar K Oliveira

Address: 611 9th st. NW. Mandan, ND 58554

Home Phone: (701) 220-0729 Work Phone: (701) 751-4393

Email: edgarolive@gmail.com

Board or Commission on which you prefer to serve:

Morton County Social Service Board.

List below the skills or qualifications you could bring to this Board or Commission:

Executive experience managing four food establishments. Management of executive structure including marketing, payables & receivables, HR and facilities management. My educational background is in psychology and biology and I spent 1 year in graduate school studying healthcare administration and another year in history of medicine.

Past boards and committees:

- Mandan Progress Organization board member.
- Bismarck Rotary Club board member.

Current boards, committees and organizations:

- Chairman of the Mandan Parking Authority
- Member of the Mandan Beautification Committee
- Member of the Mandan Healthcare Coalition
- Board member of the Environmental Health Practitioner Licensure Board.
- Member of the Bismarck Rotary Club.

If you have any special interest or reason for serving on this Board or Commission, please explain below.

I'm concerned about poverty and social services issues. I have seen a number of people including employees, that have fallen on difficult times and have at one time or another used social services. I'm interested in its workings and how I can be of service.

Principal Occupation/Source of Income (check one)

- | | | | |
|-------------------------------------|------------------------------------|--|---|
| <input type="checkbox"/> Farmer | <input type="checkbox"/> Military | <input type="checkbox"/> Investor/Retired | <input type="checkbox"/> Clerical & Sales |
| <input type="checkbox"/> Laborer | <input type="checkbox"/> Craftsman | <input checked="" type="checkbox"/> Business Owner | <input type="checkbox"/> Professional |
| <input type="checkbox"/> Government | <input type="checkbox"/> Student | <input type="checkbox"/> Other | |

List the name of each business or trust that is NOT the principal source of income, in which you have a financial interest:

NA

List below the associations or institutions with which you are closely associated, or serve as a director or officer:

Round UP LLC
Harvest LLC
Harvest Catering and Events LLC
Olive Tree LLC

Director for first three, office of Olive Tree LLC.

Signature:  Date: 6/17/18

Please return application to: Dawn R Rhone, Morton County Auditor - 210 2nd Ave NW - Mandan, ND 58554

